



ElkRM Setup Utility Instruction Manual

ELK PO Box 100
3266 US Hwy 70 West
Hildebran, NC 28637
PRODUCTS, INC. 828-397-4200 Voice
www.elkproducts.com 828-397-4415 Fax

Table of Contents

ElkRM Setup Utility Layout	3
The Toolbar	3
Network Connection Setup	4
Adding Folders	5
Adding Cameras	6
Custom Item Setup	7
Moving Items	8
Deleting Items	8

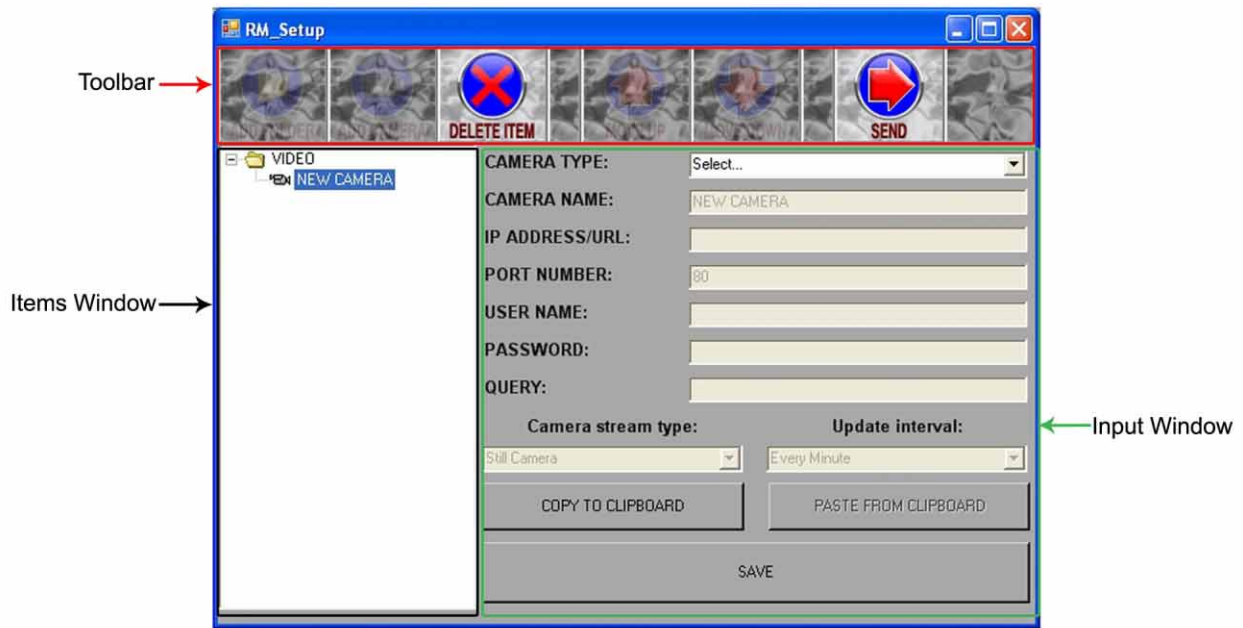
ElkRM Setup Utility

ElkRM Version 1.2.10 or later allows easy access to viewing video imagery from certain brands* if IP accessible cameras and DVR recorders. Up to date weather and traffic information may also be accessed from ElkRM. A setup utility is used to input the cameras access information, and weather, traffic, and stock information. This setup utility may be installed during the ElkRM installation. Please refer to the ElkRM Setup Guide & User Manual for more information

*For an updated list of supported cameras and DVRs, please visit www.elkproducts.com

Note: Use of the Video feature requires a Ethernet network connection to the Elk-M1 via the M1XEP Ethernet Interface. The device that is running ElkRM must be connected to that local network.

ElkRM Setup Utility Layout



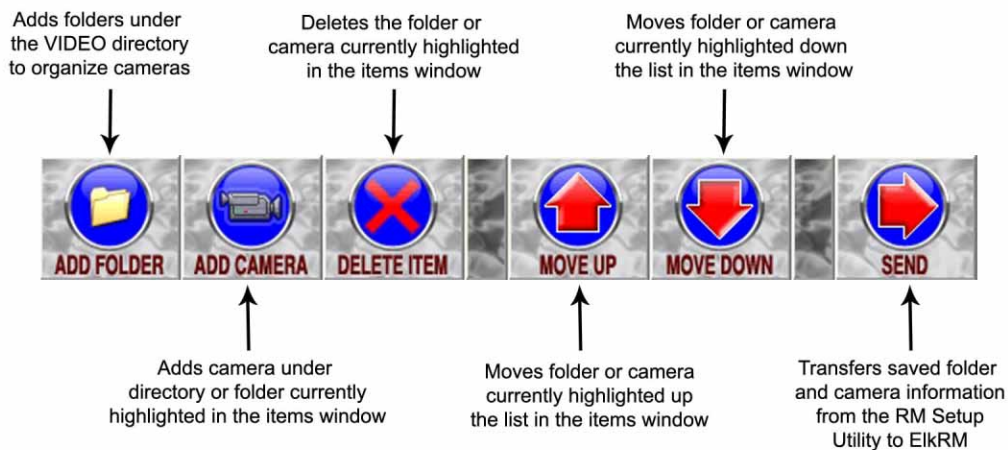
Toolbar: Displays buttons used to add/delete folders & cameras, move items in list, and send saved setup information to ElkRM. Inactive buttons are faded out

Items Window: Displays tree view of all folders and cameras currently added to the setup utility.

Input Window: Contains inputs fields and buttons for entering camera information and saving that information in the software.

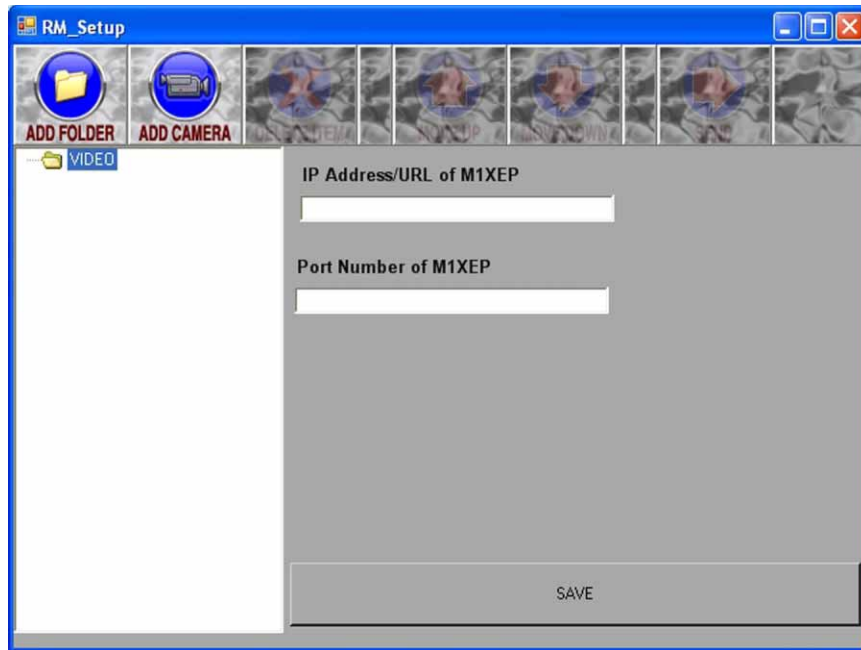
The Toolbar

The figure below explains the function of each button in the toolbar. When a particular function is not available the corresponding button will appear faded out.



Network Connection Setup

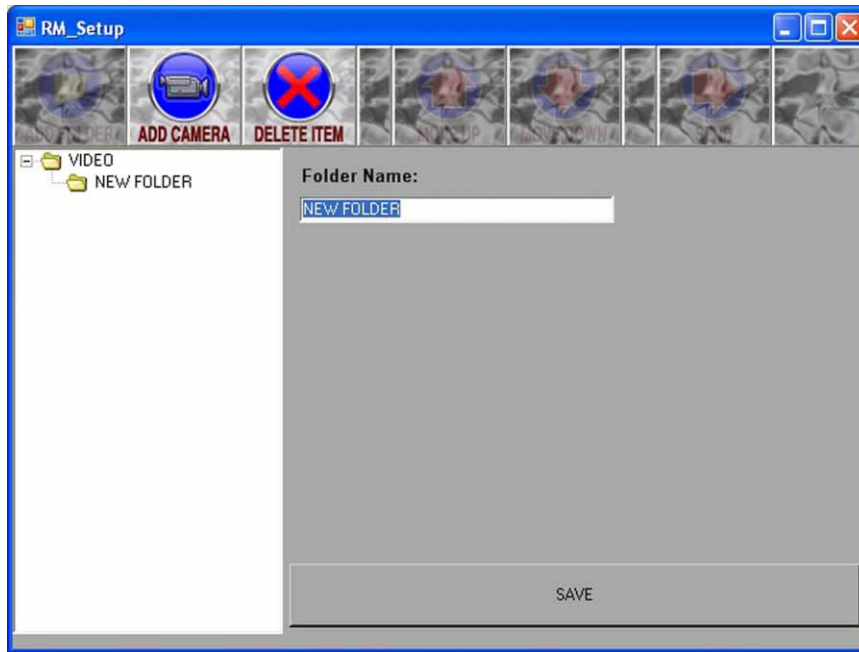
The RM Setup Utility transmits the video setup information to ElkRM through the local network via the M1XEP Ethernet Interface. Enter the IP address and non-secure port number of the M1XEP on the VIDEO screen. Click the SAVE button located at the bottom of the input window to save the information to the ElkRM Setup Utility.



Note: The RM Setup Utility uses the unencrypted (non-secure) port of the M1XEP to transmit information to ElkRM over the local network. Therefore, the non-secure port must be enabled in the M1XEP setup. Please refer to the M1XEP Installation manual for information on enabling this port. The default value for the non-secure port is 2101.

Adding Folders

Folders may be used to organize related items, making it easy for the customer to find the item they wish to view. To add a folder click the Add Folder button in the toolbar. A new folder will be added under the VIDEO directory in the items window. Enter a name in the folder name field. This is the name that will be displayed for that folder in ElkRM. The folder name may consist of up to 24 characters. After the folder name has been entered, click the save button located at the bottom of the input window.

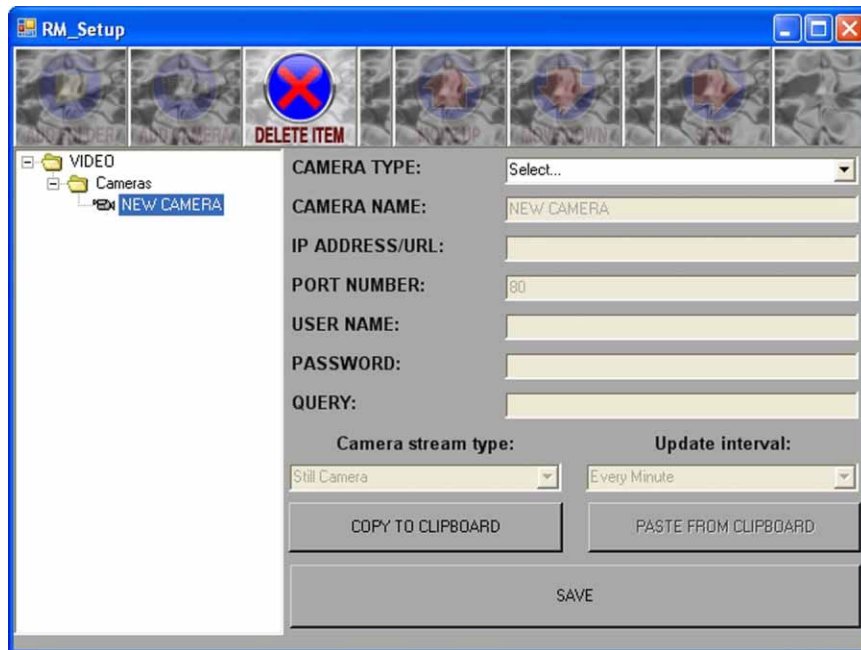


Note: Folders can only be added under the VIDEO directory. Folders may not be added within other folders. No more than 12 folders may be added to the VIDEO directory.

Adding Cameras

Cameras may be added directly under the VIDEO directory or within folders. Items added under the VIDEO directory will appear on the Video Screen in ElkRM.

To add a camera select the desired directory or folder and click the NEW CAMERA button in the toolbar. A new camera will be placed in the appropriate location in the items window. Up to 12 cameras/items may be added to each folder/directory. The input window will display the fields required to enter the camera information.



Select the appropriate camera model* from the CAMERA TYPE drop down box. If adding a weather, traffic or stock information pages please refer to the “Custom Item Setup” section in this manual on Page 7

* ElkRM only supports viewing video imagery from particular models of IP accessible cameras and DVR recorders. If your equipment is not listed, it may not be supported by ElkRM or may require custom setup. Please check www.elkproducts.com for an updated list of supported cameras and DVR recorders.

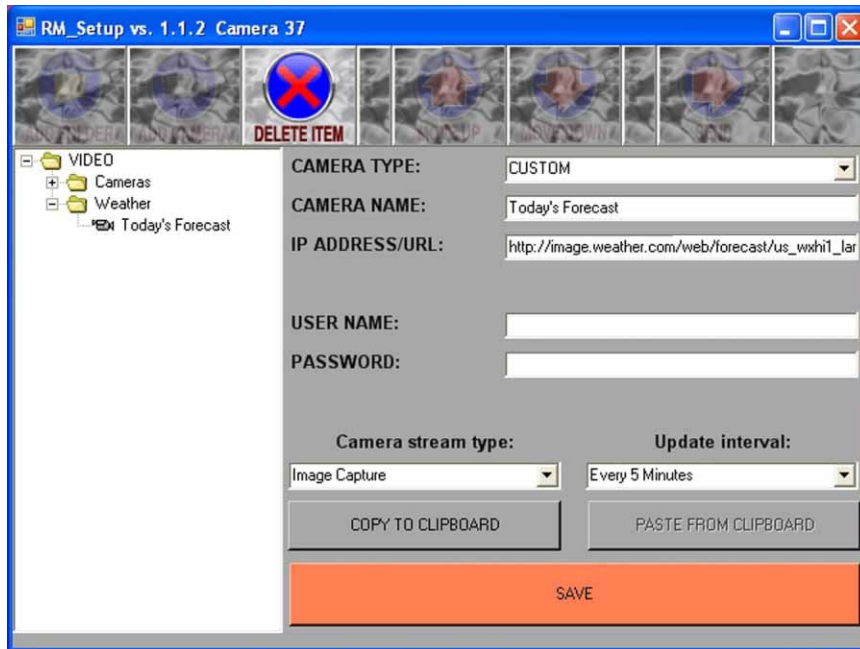
After selecting the appropriate camera type, enter a name for the camera. This is the name that will be displayed in ElkRM and may consist of up to 24 characters. Enter the IP Address/URL and port number used to access the camera from the Internet. If a user name and password is required to access the camera enter that information in the corresponding fields.

Once the necessary information has been entered, click the SAVE button to save the information in the ElkRM Setup Utility.

Custom Item Setup

The EIkRM Setup Utility is also used to configure EIkRM to display up-to-date weather, traffic, and stock information. To setup a custom item add a new camera to the folder or directory where the custom item should be located. In the CAMERA TYPE field select CUSTOM. Enter a name for the item in the CAMERA NAME field. This is the name that will appear in EIkRM.

Enter the URL/IP address of the source of the item.



The Camera stream type drop down box allows the selection of the camera format: MJpeg, Still Camera, or Image Capture. The Update Interval drop down box will only appear if Image Capture is selected as the Camera stream type. The Update Interval option determines how frequently EIkRM will request an updated image from the camera or website.

In the example shown above for the “Today’ Forecast” map, the Camera Stream Type is set to Image Capture and the Update Interval is set to Every 5 Minutes.

After entering all the required information, click the SAVE button located at the bottom of the Input Window. This will save the settings in the EIkRM Setup Utility

Moving Items

The order in which items appear in the Items Window affects the order in which they are displayed in ElkRM. It may be necessary to move items up or down the list, so that they are displayed in the desired order. Items may be moved up or down with the directory or folder the item is saved in.

To move an item up the list, highlight that item and click the MOVE UP button located in the toolbar. The item will be moved up the list by one space.

To move an item down the list, highlight that item and click the MOVE DOWN button located in the toolbar. The item will be moved down the list by one space.

Deleting Items

To delete an item highlight the item and click the delete button in the toolbar. **If a folder is deleted, its contents will also be deleted.**

Sending Setup to ElkRM

Once all items have been added and saved, and all items appear in the desired order the setup information may be sent to ElkRM. To send the video setup information, click the SEND button in the toolbar. A progress bar will be displayed on the Setup Utility screen. When the information has been successfully transferred to ElkRM a dialog box will appear stating "All items sent successfully". Click OK.

Note: ElkRP Remote Programming software must be disconnected from the M1 control before sending the setup information to ElkRM.

