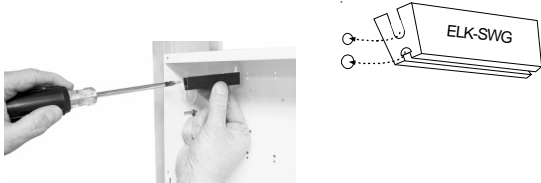


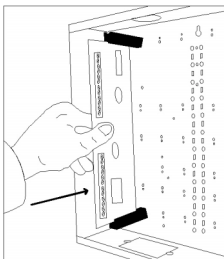
Installation

1. A single M1XOV Expander can be mounted inside the M1 enclosure on the left hand side of the M1 board using the supplied ELK-SWG Circuit Board Glides. If any additional expanders are required, they can be mounted in either an ELK-SWB14 or ELK-SWB28 enclosure. Up to 8 expanders can be mounted in an SWB14 while up to 16 expanders can be mounted in an SWB28.

The ELK-SWG Circuit Board Glides attach to the enclosure at strategically placed 2-hole punch patterns. Note that one hole in each pattern is slightly larger than the other. The small hole is for a 6/32 type "F" mounting screw and the large hole is for a half-moon shape locator tab on the bottom of each glide.



2. Starting at the top left corner, loosely start a 6/32" mounting screw in the small hole of the first 2-hole pattern. Place the slotted edge of a board glide under this screw, making sure that the half-moon tab fits into the larger hole and the grooved edge is facing down. Tighten the screw using a long shafted screwdriver. Install a second board glide in the 2-hole pattern located 6" below. Attach the second board glide using the same procedures. The grooved edge of this glide should face up.
3. Slide the M1XOV board into the grooves provided by the glides. The circuit board should slide freely. If the board is loose or too tight, simply loosen one of the mounting screws and adjust the glide to assure a good fit.



Wiring Connections

1. Turn Control Panel Master Power Switch Off.
2. Use a 4 wire cable to connect terminals +VKP, Data A, Data B, and Neg from Control to terminals 12V, A, B, and Neg on the M1XOV. NOTE: If the expander is remotely mounted, refer to information on the back and in the M1 Installation Manual for important information about data bus devices connected to multiple homerun cables.
4. Set Address Switches according to Table 1.
5. Turn the M1 Master Power Switch On.
6. Enroll the M1XOV to the M1 Control using the following procedure: Enter Installer level programming and select Menu 01-Bus Module Enrollment. Press the right arrow key to start enrollment. To view the results, press the right arrow "edit" key.
6. After enrollment, use the ELK RP Rules programming to assign the new outputs.

NOTE: If it becomes necessary to replace an enrolled device, set the new unit to the same address and repeat the enrollment. If permanently removing a device, un-enroll it to prevent a trouble condition.

L528 10/05

Output Expander 16 Voltage ELK-M1XOV

APPLICATION:

The **ELK-M1XOV** adds 16 Voltage Outputs to the M1 Control. It operates on the 4-wire data bus and features flash memory for field updating of the operating firmware. The M1G (Gold) Control can expand to 208 outputs while the M1 Std can expand to 32 outputs.

ELK
PRODUCTS, INC.

Output Expander 16 Voltage ELK-M1XOV



FEATURES:

- 16 Voltage Outputs
- Operates on the 4-Wire Data Bus
- DIP Switch Address Settings
- Flash Memory for Firmware Updating
- Two (2) - Twelve (12) Conductor "Flying Lead" Wire Harnesses
- Voltage Outputs may be converted to Relays using M1RB Relay Boards
- Status LED with Diagnostic Display
- Mounts in Enclosure using ELK-SWG Glides, SWP3 Structured Wire Plate, or Double Sided Foam Tape

SPECIFICATIONS:

- Outputs: 12 VDC @ 50 mA each
- Wire Harness Length: 12"
- Operating Power Range: 9 to 14 VDC
- Current Draw: 65 mA Nom., 330 mA Max.
- Size: 6" x 3.25" x .75" H

ELK
PRODUCTS, INC.

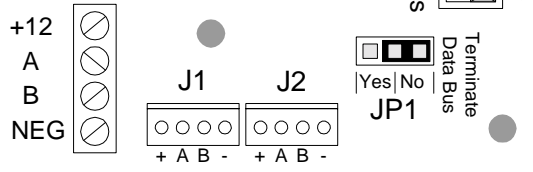
828-397-4200 Voice
828-397-4415 Fax
<http://www.elkproducts.com>
email: info@elkproducts.com
PO Box 100 • Hwy. 70W • Hildebran, NC 28637 • USA

M1XOV 16 Voltage Outputs (50 mA) each

The M1XOV "Voltage" outputs come off the 12 pin "flying lead" wire connections. Each output is +12V (positive drive) rated for 50mA. **The tan and pink wires are not used.**

NOTE: Output numbers shown beside each connection are relative to the board only. I.E. Output 1 on the board will actually be Output 17 if the expander is set to and enrolled as Address 02 (Outputs 17-32).

Switch 2 shown in ON position (Address 02). Other switches are Off.



ADDRESS SETTING: Locate the four "Address" switches. Each has a position of OFF or ON (binary 0 or 1) with a decimal equivalent of (1, 2, 4, or 8). The total decimal value for the "ON" switches sets the bus address. This determines which outputs (banks of 16) are assigned to the expander. E.G. Address 5 would be set with switches 1 and 4 ON (1+4=5) and switches 2 and 3 OFF. Outputs Expanders are factory pre-set to address 2 (Outputs 17 to 32).

Addr	Output Expander	Addr	Output Expander
1	Outputs 1-16	8	Outputs 113-128*
2	Outputs 17-32	9	Outputs 129-144*
3	Outputs 33-48*	10	Outputs 145-160*
4	Outputs 49-64*	11	Outputs 161-176*
5	Outputs 65-80*	12	Outputs 177-192*
6	Outputs 81-96*	13	Outputs 193-208*
7	Outputs 97-112*		* M1G Only

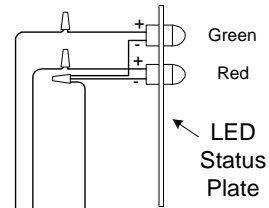
TABLE 1

Utilizing an M1DBH Data Bus Hub

Since the M1XOV connects to the M1's RS-485 Data Bus, it can be installed inside the Control or virtually anywhere along the data bus. The Data Bus requires only 4 wires, 2 for power + 2 for data. However, due to the relatively high speed of the data bus, special wiring connections are necessary to avoid data reflection errors on long cables OR multiple cable "homeruns". **See the M1 Installation Manual for important information about Data Bus termination, including methods and recommendations for avoiding data bus problems.** The primary goal is to have no more than 2 data bus branches (cables) running from the control, with each being terminated at its end using a 120 Ohm end of line resistor. There are two ways to accomplish this goal. 1) Using 4-wire cable, run no more than 2 cables and connect all devices paralleled (daisy chained) along this cable path. OR 2) Using 6 or 8 wire cables (CAT5 or CAT6 is ideal), run as many cables as you want so long as the data A & B wires are connected to a spare pair of wires so that they double back (return) to the control and are connected in series to the outgoing data A & B lines of the next cable. By keeping the data lines in a series circuit it will appear to be one long cable. This virtually eliminates data reflection errors. This is easily done using an ELK-M1DBH Data Bus Hub.

IMPORTANT INFORMATION

Do Not Use the M1XOV Voltage outputs to directly drive high (large) current loads. Each output is limited to 50 mA. Also, when calculating the M1 total current load, keep in mind that if all 16 outputs from an M1XOV were turned on and were drawing the maximum of 50 ma each, the resulting total load would be 800 mA from the M1. An auxiliary power supply may be required and is especially recommended if the M1XOV is remotely mounted from the M1 Control.



Using the M1XOV to drive two (2) indicator LEDs on an LED Status Plate

